

Mounting instruction

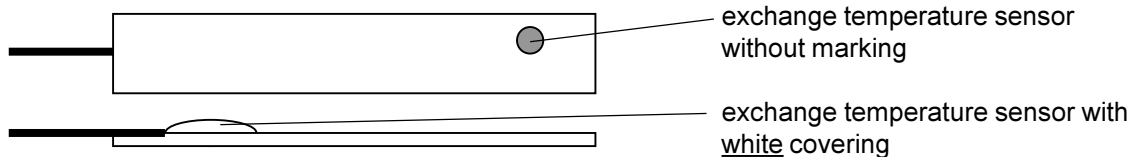
Exchange of temperature sensors in the 4-fould induction module

1. Use and explanation:

- This mounting instruction shall be a help to exchange temperature sensors in induction modules on site.
- The used figures are chosen exemplarily for one type. The cable duct and cable laying of the temperature sensors depend on the type and therefore can differ from the figures.
- Before use read this mounting instruction completely, pay attention to further technical guidelines which are specific for the customers, and check their conformity with this mounting instruction.

2. Important information for handling this mounting instruction:

- Basically exchange all temperature sensors.
- The temperature sensors must be exchanged one after the other in order to avoid a wrong connection with the connectors.
- Only exchange temperature sensors which: are marked with a white cover **and** without a coloured marking at the upper side.



3. Important information for the mounting:

- All works with the induction module may only be made during a condition absent of voltage.
- Keep prepared appropriate tools for opening the cooktop and removing the induction module.
- Keep prepared a clean and not too hard pad (e.g. cardboard or cloth) for depositing the cooktop.
- Keep prepared spare parts.

4. Required spare parts:

Induction repair kit for temperature sensor no. 319 624 800/3

5. Work flow:

- 5.1 Open cooktop.
- 5.2 Dismount defective temperature sensor.
- 5.3 Prepare spare parts.
- 5.4 Mount new temperature sensor.
- 5.5 Close cooktop and test function.

5.1 Open cooktop

Attention! Before opening the cooktop, disconnect the cooktop from the mains.

Loosen Touch Control connector



Figure 5.1.1

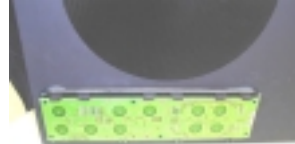
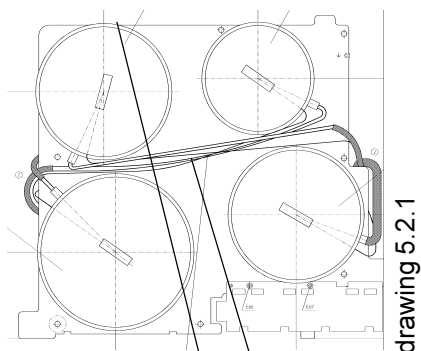


Figure 5.1.2

5.1 Dismount defective temperature sensor

Attention! Exchange temperature sensors one after the other.
This is to avoid a wrong connection.

1. peel off insulation with the film.



drawing 5.2.1

2. pursue cable duct
(possibly loosen binder)

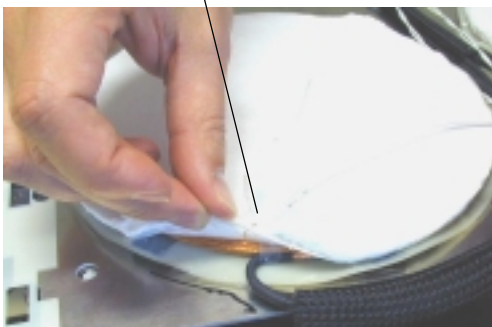
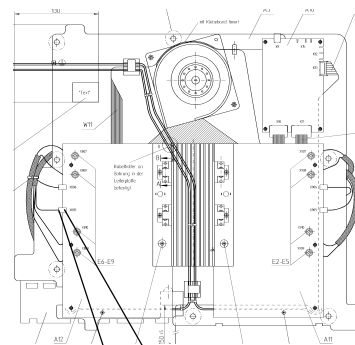


Figure 5.2.1



Figure 5.2.2



drawing 5.2.2

3. loosen connector and remove
temperature sensor

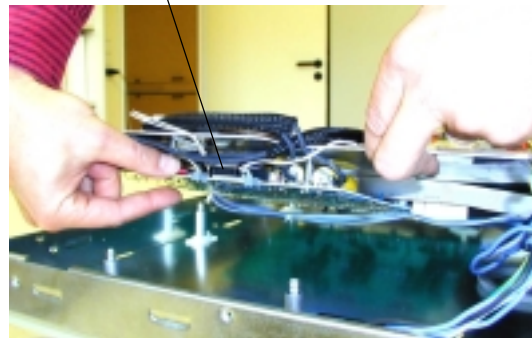
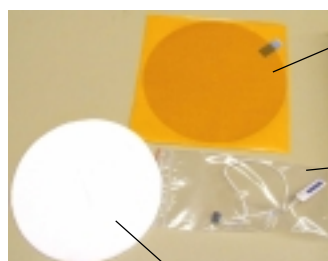


Figure 5.2.3

5.3 Prepare spare parts



Adhesive film

Attention! Pay attention to the correct size

Temperature sensor

Attention! Pay attention to the correct cable length

Insulation

Attention! Pay attention to the correct size

5.4 Mount temperature sensors



Figure 5.4.1

1. Peel off the protective film (without the blue peel-off aid) from the adhesive film.

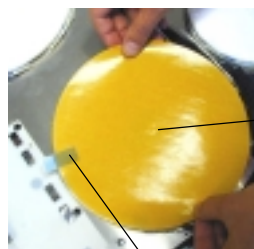
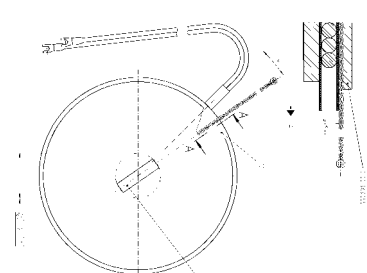


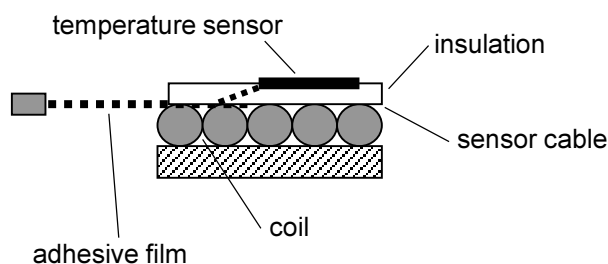
Figure 5.4.2

2. Stick adhesive side centrally to the coil.

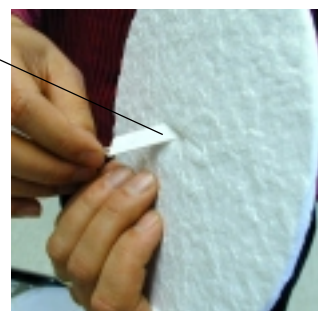
3. Peel off the protective film at the upper side of the adhesive film with the blue peel-off aid.



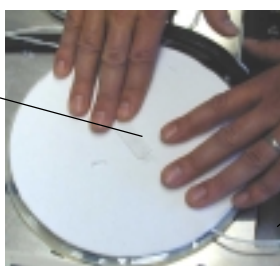
drawing 5.4.1



4. Insert temperature sensor from the bottom through the aperture into the insulation.



5. Stick insulation centrally on the adhesive film.
Attention! Align sensor and sensor cable according to drawing 5.2.1.



6. Lay sensor cable

Attention! Lay cable according to the original plans.
See 5.2.1 and 5.2.2.

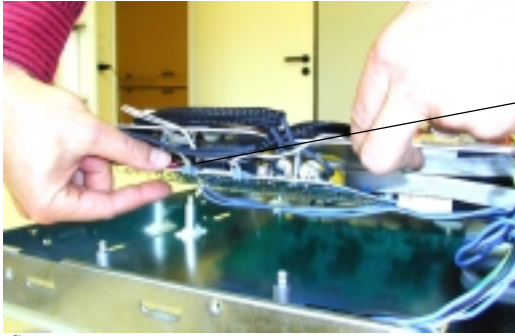


figure 5.4.5

7. Put the temperature sensor connector firmly onto the board.

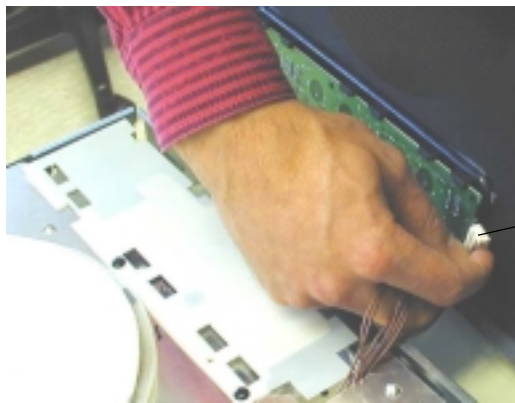


figure 5.4.6

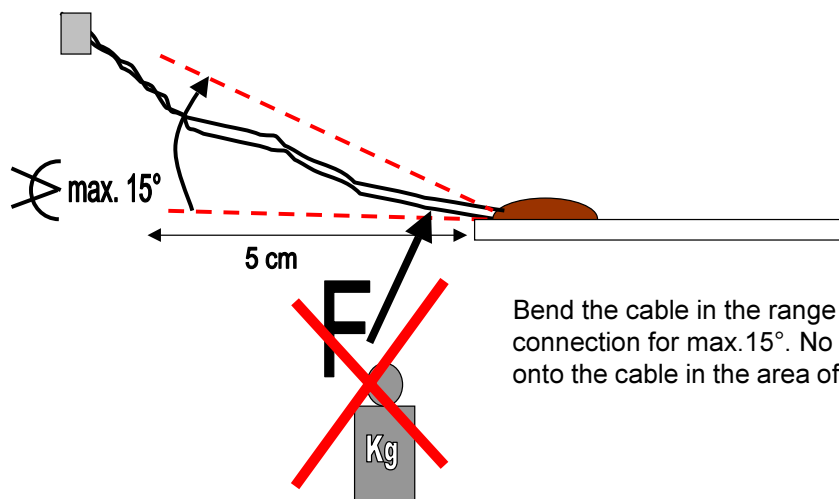
8. Put the Touch Control connector firmly onto the board.

5.5 Close cooktop and test function

- Close the cooktop correctly.
- Test function and electric safety.



Achtung!
Attention!
La estimacio`n!
Attenzione!



Bend the cable in the range of up to 5 cm after the connection for max. 15°. No compressive forces (F) onto the cable in the area of the connection.